







SHUTTLEWAGON

VAN AIR

SHUTTLEWAGON

**N**  
NAVIGATOR  
BY SHUTTLEWAGON





SHUTTLEWAGON

NAVIGATOR

SHUTTLEWAGON





SHUTTLEWAGON

NAVIGATOR









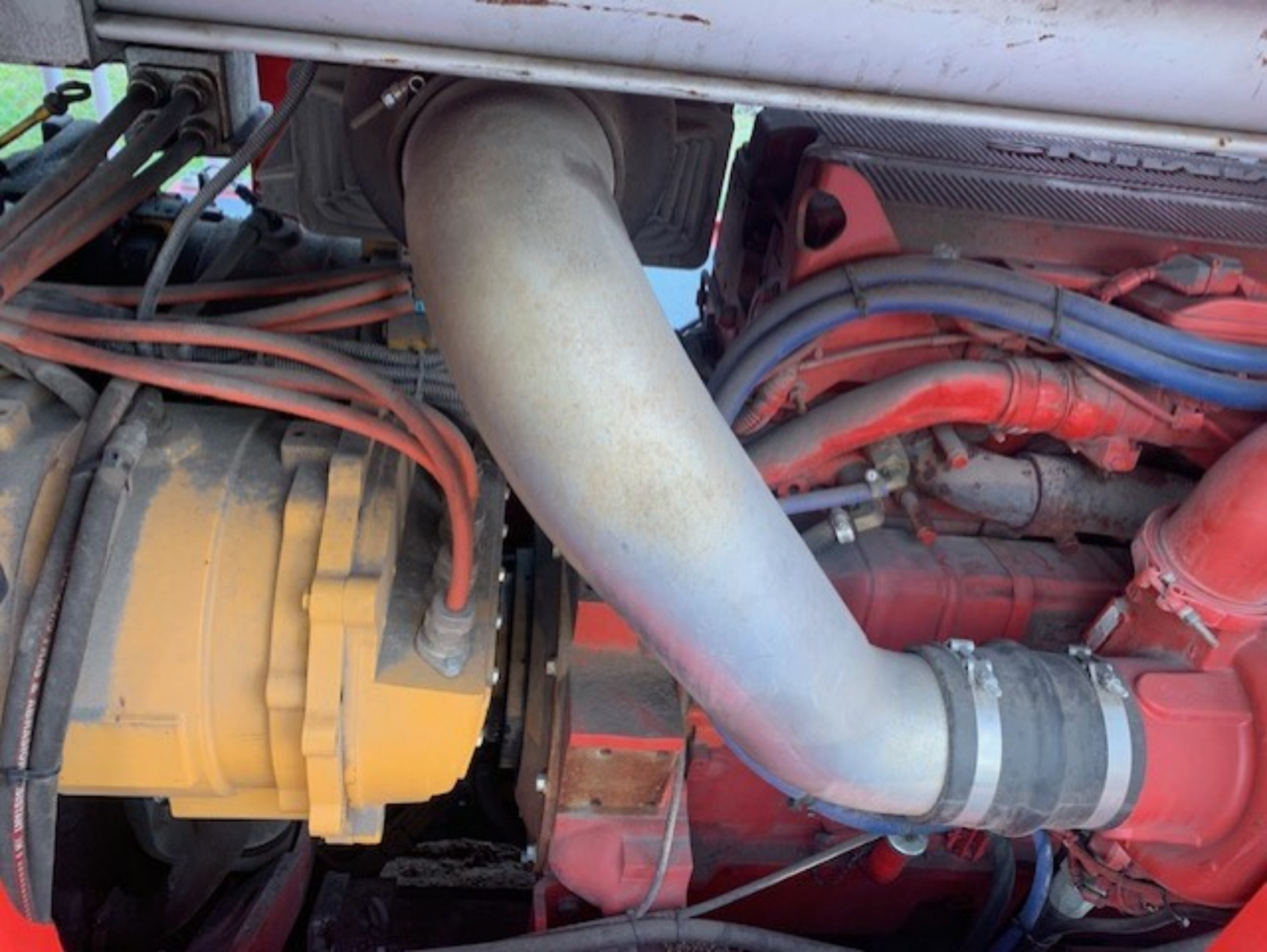






WARNING

Windscheid  
Washer Fluid













FLOW LIGHTS  
HIGH

BROOM

MIRROR  
HEATERS

LOW

AIR BELL

CAMERA  
SWITCH

RELEASE

FRONT

WIPERS

REAR

ADD

OFF

ON

START

APPLY  
THRUSTLE





MO 64132  
(6) 767-0300  
ttlewagon.com



Made in USA

NO.  
AL NO.  
GHT

NVX9060

906019030

121,000 lbs.



SHUTTLEWAGON

SHUTTLEWAGON.

*McLaren, Oregon*





superdry  
Systems Inc.

Dr Series

Product Information  
Model: SD-1000  
Capacity: 100 pints per day  
Power: 115V, 60Hz, 1.5A  
Weight: 15 lbs  
Dimensions: 10" x 10" x 10"



CAUTION  
Do not touch the hot hydraulic oil.  
Hydraulic oil may be hot (150°C/300°F).

LUBE ↓ HERE

WARNING  
Do not touch the hot hydraulic oil.  
Hydraulic oil may be hot (150°C/300°F).

WARNING  
Do not touch the hot hydraulic oil.  
Hydraulic oil may be hot (150°C/300°F).





**VAN AIR**<sup>®</sup>  
AIR POWER TO GO<sup>™</sup>

**RELIANT** ▶  
RS85



Full Air Brake Reservoir

35



ENM

0 1 2 7 7 9

HOURS

QUARTZ CHICAGO

50 100 150  
0 50 100

AIR  
TO GO  
ANT

000

DEF  
Diesel Exhaust Fluid

ULTRA-LOW SULFUR  
FUEL ONLY



**WARNING**  
This equipment can  
only be used by  
trained operators.





**WARNING**  
1. Do not operate the machine until you have read the operator's manual.  
2. Do not operate the machine on uneven or slippery surfaces.  
3. Do not operate the machine on slopes greater than 15 degrees.  
4. Do not operate the machine on wet or icy surfaces.  
5. Do not operate the machine on soft or loose ground.  
6. Do not operate the machine on uneven or slippery surfaces.  
7. Do not operate the machine on slopes greater than 15 degrees.  
8. Do not operate the machine on wet or icy surfaces.  
9. Do not operate the machine on soft or loose ground.









**DEF**  
Diesel Exhaust Fluid

ULTRA-LOW SULFUR  
FUEL ONLY





TOP

S  
ION

Bottom

S  
ION

The logo for ELTS PROPULSION features a blue stylized 'e' with a plug icon at the bottom right, followed by the letters 'ELTS' in a bold, black, sans-serif font. Below 'ELTS', the word 'PROPULSION' is written in a smaller, blue, sans-serif font.

**ELTS**  
PROPULSION

The logo for ELTS PROPULSION features a blue stylized 'e' with a plug icon at the bottom right, followed by the letters 'ELTS' in a bold, black, sans-serif font. Below 'ELTS', the word 'PROPULSION' is written in a smaller, blue, sans-serif font.

**ELTS**  
PROPULSION























